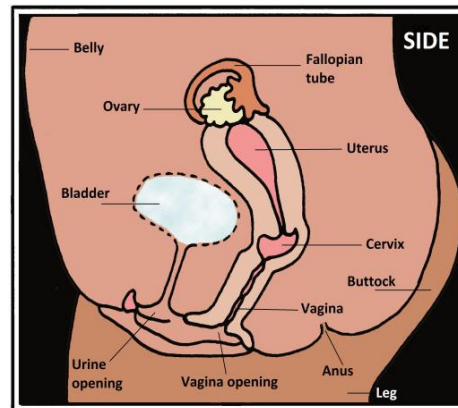
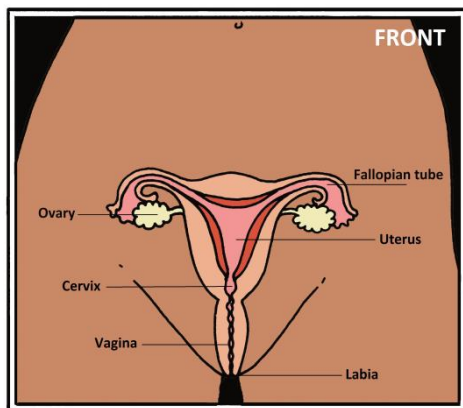


A GIRL'S VAGINA AND EVERYTHING AROUND IT

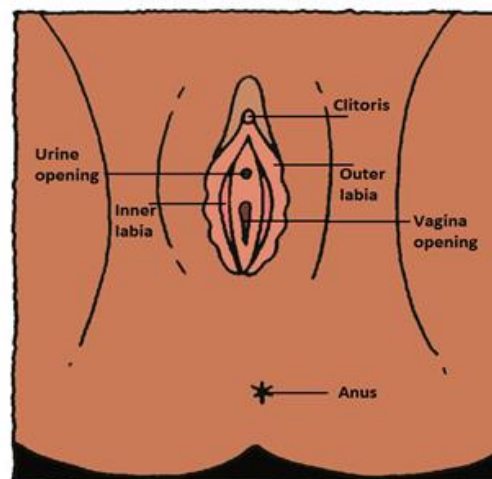
These are a girl's reproductive organs inside the body, seen from the front and the side. Notice the names and functions of the different parts.



- **Ovary:** The ovaries are two small organs on either side of the womb. Before puberty, it's like the ovaries are asleep. During puberty, the ovaries start to become active. Once a month, one of the ovaries will release one egg.
- **Fallopian tube:** The fallopian tube connects the ovary to the uterus.
- **Uterus:** The uterus — or womb — is the place babies grow.
- **Cervix:** The cervix is the narrow corridor between the vagina and uterus.
- **Vagina:** The vagina is a hollow canal or tube that can get wider to deliver a baby when it is ready to be born.
- **Labia:** The labia are the two sets of skin folds (often called lips) on either side of the opening of the vagina. The labia majora are the outer lips and the labia minora are the inner lips. Often the inner lips are longer than the outer lips.
- **Bladder:** The bladder is the organ that collects urine

These are a girl's outside parts of the vagina. We call this the vulva. Notice the names of the different parts.

- **Clitoris:** A small bump at the top of the vulva, between the labia. The clitoris is the most sensitive place of a girl's body.
- **Outer & inner Labia:** The labia are the two sets of skin folds (often called lips) on either side of the opening of the vagina. The labia majora are the outer lips and the labia minora are the inner lips. During puberty the outer lips become bigger and thicker and they inner lips may grow too.
- **Urine opening:** This is where urine leaves the body. Below the urinary opening is the vaginal opening.
- **Vaginal opening:** Entrance to the vagina.
- **Anus:** This is where faeces (poop) leave the body.



The hymen is a skin tissue that surrounds or partially covers the external vaginal opening. It's a kind of ribbon made from skin tissue, like a threshold at the entrance. For some girls this ribbon is thicker and a bit rigid. For other girls it can be thin and more elastic.

So this means the hymen is not a membrane which covers the entrance. So the hymen cannot burst, not during sexual intercourse. Not even when a girls' vagina is entered with a finger or when a tampon is inserted.

